

About Deccan Education Society

The Deccan Education Society (DES), Pune is one of the oldest and renowned educational societies in India, with over 141 years of dedicated service to the nation in the field of education. DES was founded in 1884 by eminent national personalities like Lokmanya Tilak and Gopal Ganesh Agarkar. The DES at present has 60 educational institutions from pre- primary stage to post graduation and research levels in Arts, Science, Commerce, Management, Nursing, Physiotherapy etc. Our alumni include intellectuals, industrialists, politicians, defense personnels, litterateurs and sports persons of highest caliber who have rendered valuable services to the Nation.



DES's Fergusson College, Pune

About Kirti College

D.E. Society established Kirti College in 1954 in Mumbai. Since then, the College has continually catered to students from underprivileged and marginalized sections of society. Affiliated to the University of Mumbai, it is supported by a strong team of dedicated academicians committed to the Deccan Education Society's motto, "Knowledge is Power." The College currently offers undergraduate programmes across all three faculties and postgraduate programmes in Science. Its unwavering service to the community and strong academic standards have earned it NAAC's 'A' grade thrice, the University of Mumbai's 'Best College' award, a place among India Today's top 50 colleges, and recognition under the FIST Programme of the Ministry of Science and Technology. Since 2022-23, Kirti College has enjoyed autonomous status and has been awarded ₹5 crores under the PM-USHA scheme.

For Enquiries Contact

bmsdeptkirti22@gmail.com

Shraddha Raje - 9821866778

Harshal Adani - 9833710500

Department landline: 022 62764557

Principal's Desk



Prof. Dr. Anil Markandeya

Welcome to Kirti M. Doongurse College, a vibrant institution with a strong legacy of academic excellence and holistic student development. Our students shine in academics, sports, and cultural activities, reflecting the energetic and supportive campus atmosphere. With the NEP implementation, we follow a multidisciplinary and experiential learning approach that encourages students to explore diverse courses, engage in field projects, and participate in community-based activities—building real-world skills and confidence. Skill building is central to our teaching. Students receive training in communication, digital tools, analytics, entrepreneurship, and essential workplace competencies. The Placement and Career Guidance Cell further enhances employability through résumé workshops, interview preparation, aptitude training, GD-PI sessions, internships, and expert-led sessions.

Cultural events like Antarang and sports competitions such as Kirti Karandak enrich campus life and nurture leadership, teamwork, and talent. Through this integrated learning ecosystem, Kirti College ensures every student is industry-ready and truly transformed over their three-year journey

Co-ordinator's Desk

Our Department offers a rich, industry-focused curriculum delivered by a highly committed and experienced faculty team. We take learning beyond the classroom through field projects, case studies, industrial visits, internships, and hands-on activities that build real-



Mrs. Priyanka Jinagouda

world skills. Our Placement & Training support ensures students are career-ready with resume workshops, interview practice, and strong industry connections. In just three years, we strive to transform students into confident, capable, and responsible management professionals. We aim to shape not just managers, but well-rounded individuals ready for tomorrow's challenges. Our department encourages creativity, teamwork, and critical thinking, ensuring every student discovers their true potential and direction in life.



Deccan Education Society's
**KIRTI M. DOONGURSEE COLLEGE OF
ARTS, COMMERCE AND SCIENCE
(AUTONOMOUS)**

NAAC Accredited 'A' Grade,
Best College Award by University of Mumbai &
Recipient of PM-USHA Grant

Department of
Bachelors Of Management Studies

AICTE & DTE Approved
3-years Degree Programme
Affiliated to University of Mumbai

DES Mumbai Campus, Off. V.S. Marg, Chandrakant
Dhuru Wadi, Dadar-West, Mumbai, Maharashtra-400 028.

kirticollege.edu.in (022)-62764557

principal@kirticollege.edu.in

Admission Seat Matrix (Category wise)

3567 - DES'S KIRTI M. DOONGURSEE COLLEGE OF ARTS SCIENCE AND COMMERCE (AUTONOMOUS)

Un-Aided-Autonomous			CAP Seats: 120																	
Choice Code	Course Name						SI		MS Seats		All India		Minority Seats		Institute Seats		Orphan			
0356710270U	BMS						120		102		18		0		0		1			
Category	OPEN		SC		ST		VJDT		NTB		NTC		NTD		OBC		SEBC		Total	
General / Ladies	G	L	G	L	G	L	G	L	G	L	G	L	G	L	G	L	G	L	G	L
State Level	25	11	9	4	5	3	2	1	1	1	2	1	2	0	14	6	7	3	97	
PWD	2		0		0		0		0		0		0		0		0		2	
PWD Common Reserved Seats :3																				
DEF	2		0		0		0		0		0		0		0		0		2	
DEF Common Reserved Seats :3																				
Economically Weaker Section (EWS) Seats :12																				

Application Form Fee: Rs 200

Fee for AY 2025-26 (Open Category): ₹35,340/-

Majors (Specializations) at BMS, Kirti College



**MARKETING
MANAGEMENT**

Analyzing market trends, customer needs, building & maintaining a strong brand identity, creating & executing Ad campaigns, developing new products, planning & implementing sales strategies.



**HUMAN RESOURCE
MANAGEMENT**

Hiring and selecting candidates, improving employee skills, managing salaries and benefits, evaluating performance, addressing concerns, ensuring safety, and following labor laws.



FINANCE

Involves predicting and analyzing financial performance, managing company investments and optimizing asset allocation, and identifying and mitigating financial risks to ensure the organization's financial stability.

DEPARTMENT OF BMS

A dynamic and student-centric department that prepares learners for the modern business world. It combines a strong academic foundation with practical exposure through projects, presentations, field activities, workshops, and industry interactions. Supported by experienced faculty and a progressive learning environment, the department focuses on developing leadership, communication, analytical abilities, and professional ethics. It also conducts seminars, events, and placement-oriented programs, enabling students to grow into competent and career-ready management professionals.



- **Reservation Benefits:** Available for eligible candidates as per admission category in state merit list
- **Admission Process:** Through MH-CET, as per the eligibility criteria set by the CET Cell and the University of Mumbai.
- **Important Notice:** Students should regularly check www.bba2025.mahacet.org for the Admission Notice for BBA/BMS/BBM/MBA (Integrated) for AY 2025-26.
- **CAP Rounds:** Candidates must apply online on www.mahacet.org according to the schedule announced by the CET Cell.

Department Activities



Class Presentations



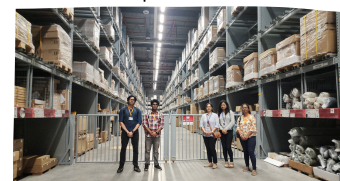
Guest Speakers



Group Discussions



Career Guidance



Field/ Industry Visit



Dept. Festival

Department's Salient Features



Placement support & career guidance.



One-on-one Mentorship



Aastha- Counseling Cell



Project and Field based learning



Skill-building add-on certifications



Active cultural, sports & extracurricular events